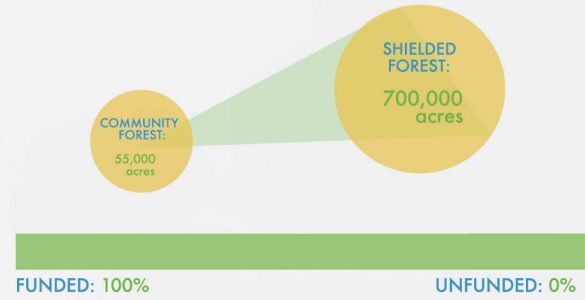


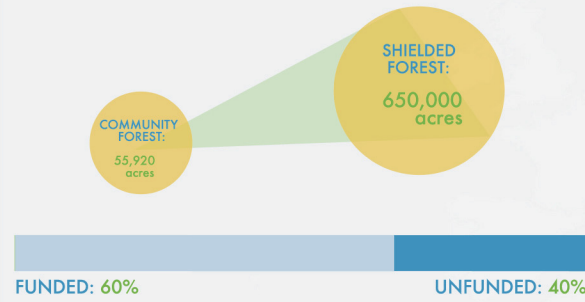
AWACACHI

COUNTRY: ECUADOR
 VILLAGES: 4
 POPULATION: 865
 BUDGET: £15,000
 INCOME UPLIFT: 171%
 INVESTMENTS: CACAO



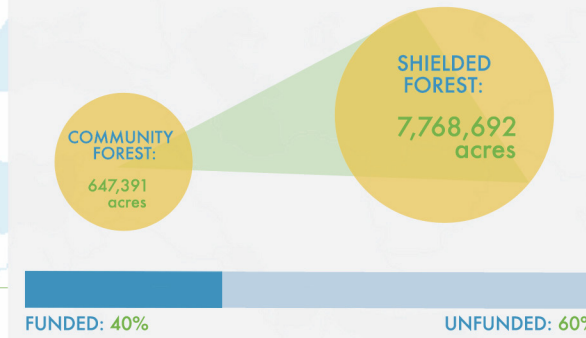
AWAJÚN

COUNTRY: PERU
 VILLAGES: 6
 POPULATION: 2,213
 BUDGET: £250,000
 INCOME UPLIFT: 215%*
 INVESTMENTS: TRADITIONAL JEWELLERY, FISH FARMS

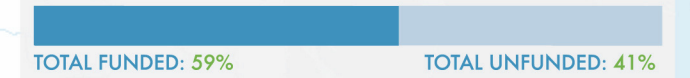


LUBUTU

COUNTRY: DRC*
 VILLAGES: 8
 POPULATION: 12,900
 BUDGET: £150,000
 INCOME UPLIFT: 125%*
 INVESTMENTS: TREE NURSERIES

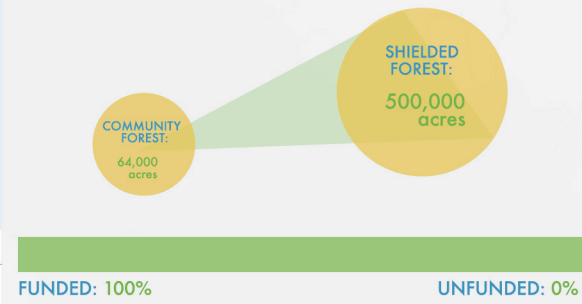


BUDGET 2013/2014: £1,450,000
 TOTAL COMMUNITY FOREST: 1,019,252 acres
 TOTAL SHIELDED FOREST: 11,818,692 acres



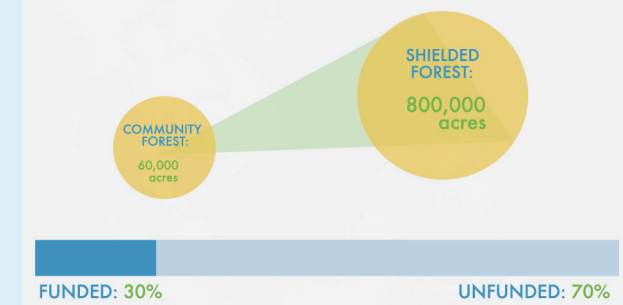
MADEIRA

COUNTRY: BRAZIL
 VILLAGES: 2
 POPULATION: 2,400
 BUDGET: £5,000
 INCOME UPLIFT: 98%
 INVESTMENTS: BRAZIL NUTS



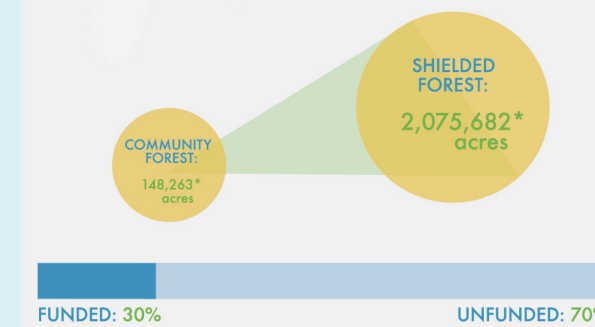
HUNSTEIN RANGE

COUNTRY: PAPUA NEW GUINEA
 VILLAGES: 6
 POPULATION: 1,975
 BUDGET: £90,000
 INCOME UPLIFT: 125%*
 INVESTMENTS: RESIN



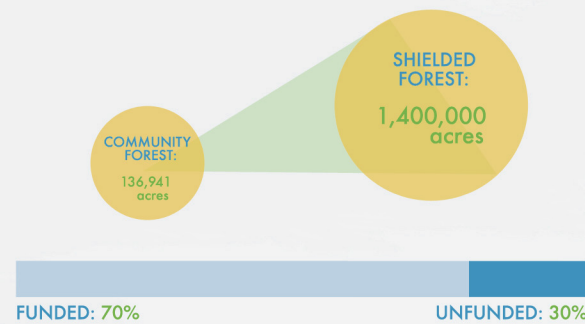
GADAIKU

COUNTRY: PAPUA NEW GUINEA
 VILLAGES: 3
 POPULATION: 270
 BUDGET: £110,000
 INCOME UPLIFT: 125%*
 INVESTMENTS: COFFEE, BANANAS



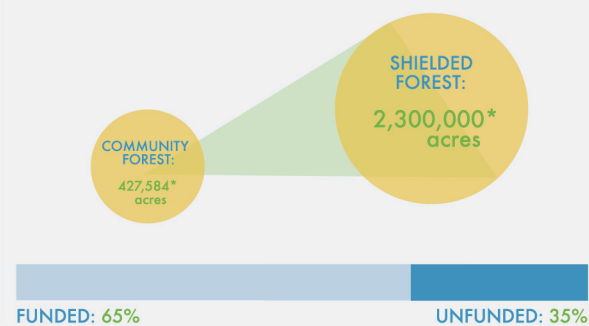
ASHANINKA

COUNTRY: PERU
 VILLAGES: 15
 POPULATION: 2,151
 BUDGET: £500,000
 INCOME UPLIFT: 136%
 INVESTMENTS: CACAO, COFFEE



EL SIRA

COUNTRY: PERU
 VILLAGES: 24
 POPULATION: 4,740
 BUDGET: £330,000
 INCOME UPLIFT: 85%*
 INVESTMENTS: RUBBER



COUNTRY: Project location
VILLAGES: Number of villages supported by project
POPULATION: Number of people supported by project
BUDGET: Funds needed for next twelve month period
INCOME UPLIFT: Percentage increase in sustainable income
INCOME UPLIFT*: Target percentage increase in sustainable income
INVESTMENTS: Key sustainable income streams
COMMUNITY FOREST: Forest directly protected by Cool Earth project
SHIELDED FOREST: Estimated neighbouring forest shielded by project
COMMUNITY FOREST*: Target forest to be protected by Cool Earth project
SHIELDED FOREST*: Estimated forest to be shielded by target community forest
FUNDED: Percentage of funding secured for project
UNFUNDED: Percentage of funding needed for project